

# STYLE AND **STRENGTH**



# CREATE YOUR DREAM SPACE

No matter where you call home—a bustling urban townhouse, a cozy suburban haven, or a sprawling country estate—our black vinyl fences offer the perfect blend of style, durability, and privacy. Crafted to enhance the beauty of your surroundings, these fences are built to withstand the test of time while adding a touch of elegance to your property.



Imagine a fence that not only defines your space but also complements it, creating a seamless transition between your home and the world outside. Our vinyl fences do just that, offering a sophisticated look that suits any landscape.

Choose a fence that mirrors the care and attention you put into your home. Whether you're looking to enhance security, boost curb appeal, or simply create a private oasis, our fences are the ideal solution to surround the space you love.

# STANDING GUARD

---

Transform your outdoor space with our premium black vinyl fencing, designed to bring lasting style and security to your property. It's the perfect combination of privacy, strength, and low-maintenance durability, providing peace of mind while elevating the look of your yard.

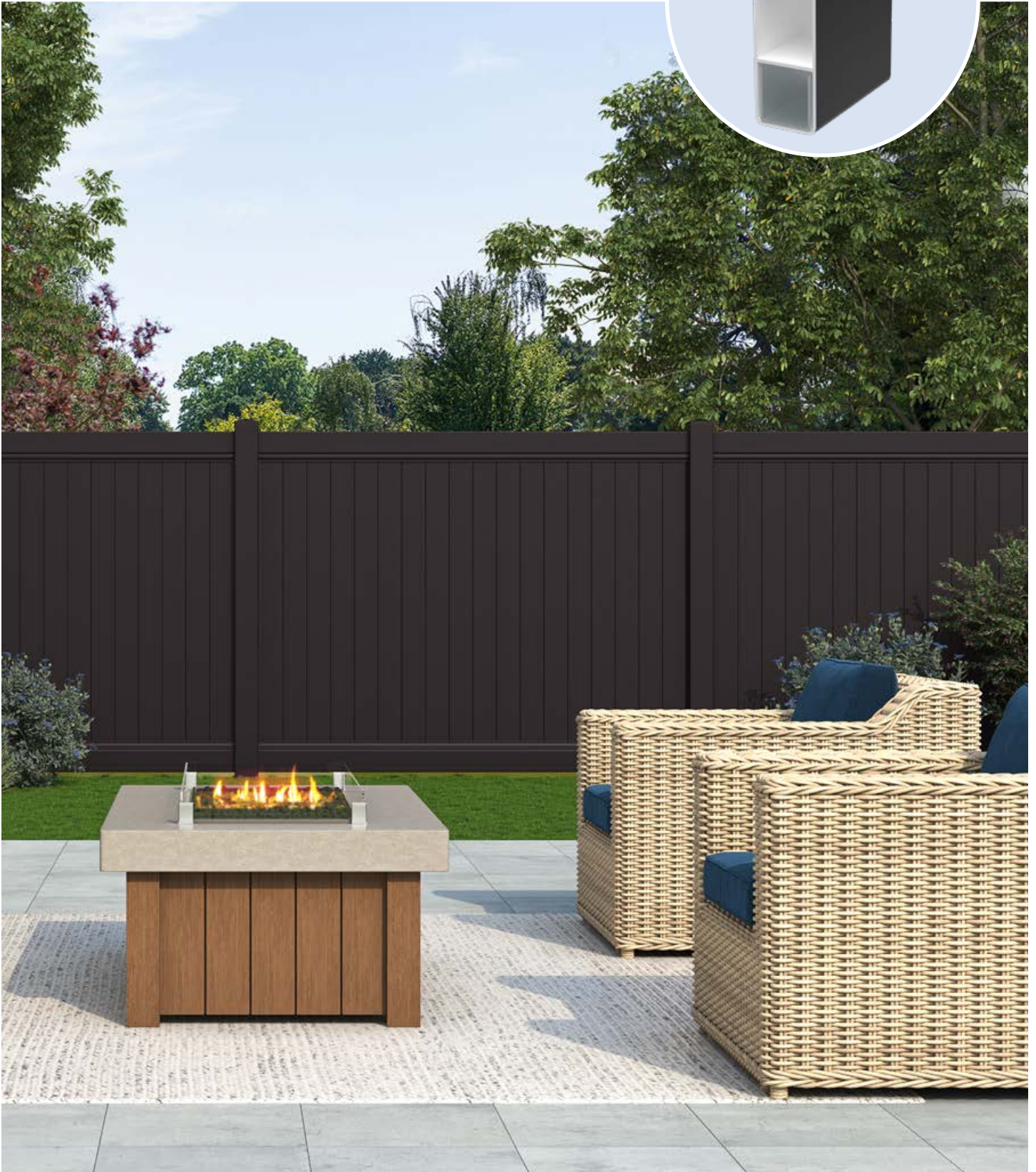
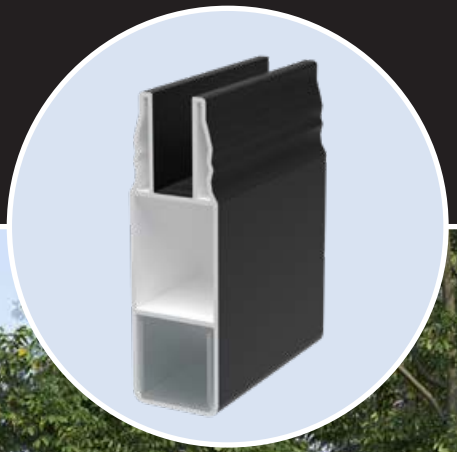
Our innovative SureLock privacy panels snap together effortlessly, creating a seamless, gap-free finish with a sleek, modern look. Engineered to withstand even the toughest weather conditions, the reinforced design ensures your fence stays strong against wind and the elements.

Made in the USA, our black vinyl fence offers more than just protection—it's an investment in the beauty and safety of your property. Whether you're securing a pool, safeguarding loved ones, or enhancing your yard's elegance, you'll enjoy privacy and security without sacrificing style.

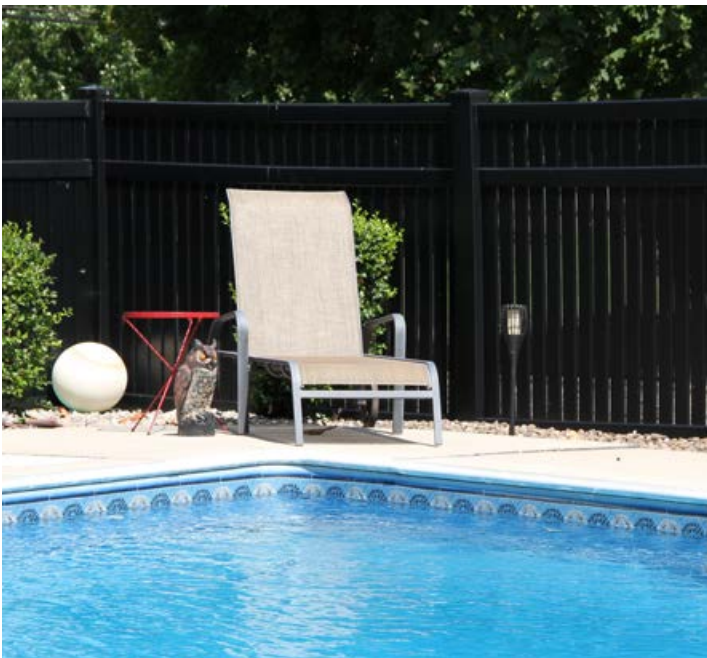




Superior's fence rails contain reinforcements  
for **ultimate strength**.









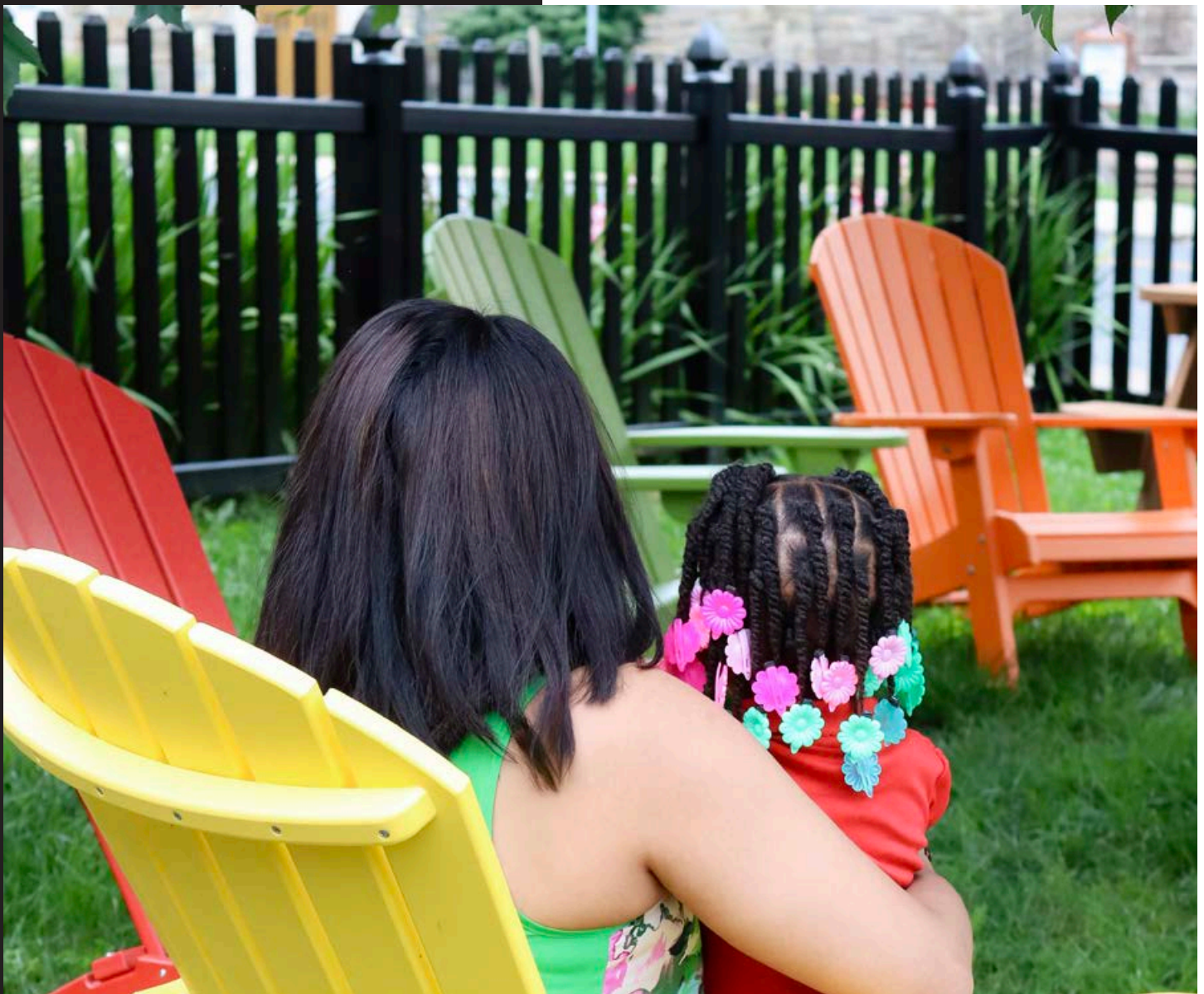
# BLACK BEAUTY

---

The perfect fusion of privacy and modern design. Crafted to offer you a sense of seclusion without completely closing off your space, this fence allows for gentle airflow while maintaining a sophisticated, contemporary aesthetic. Its sleek lines and minimalist design make it a stylish addition to any outdoor setting, providing just the right amount of privacy without compromising on elegance.

Durable and refined, the Imperial Semi-Privacy Fence is the ideal choice for those who value both form and function in their outdoor spaces.





# BUILT TO **STAND OUT**

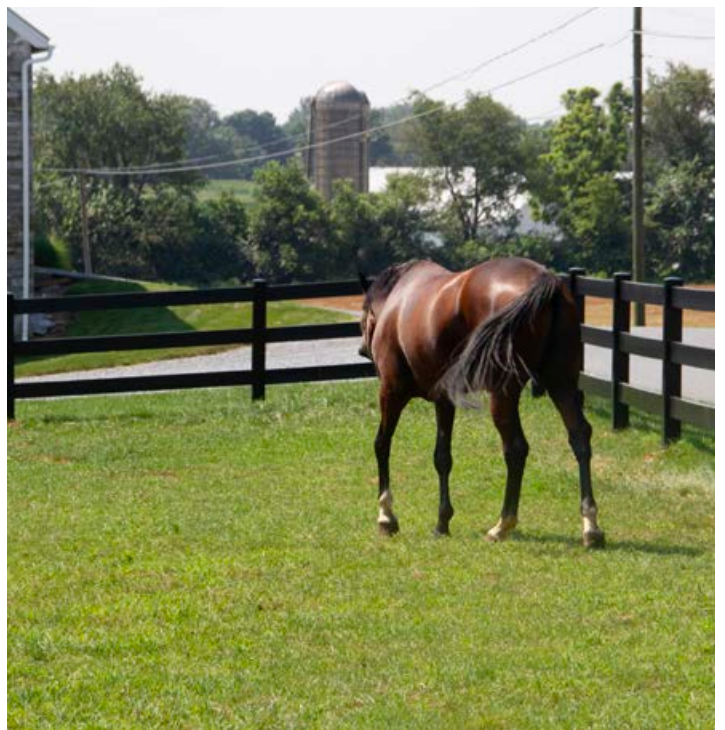
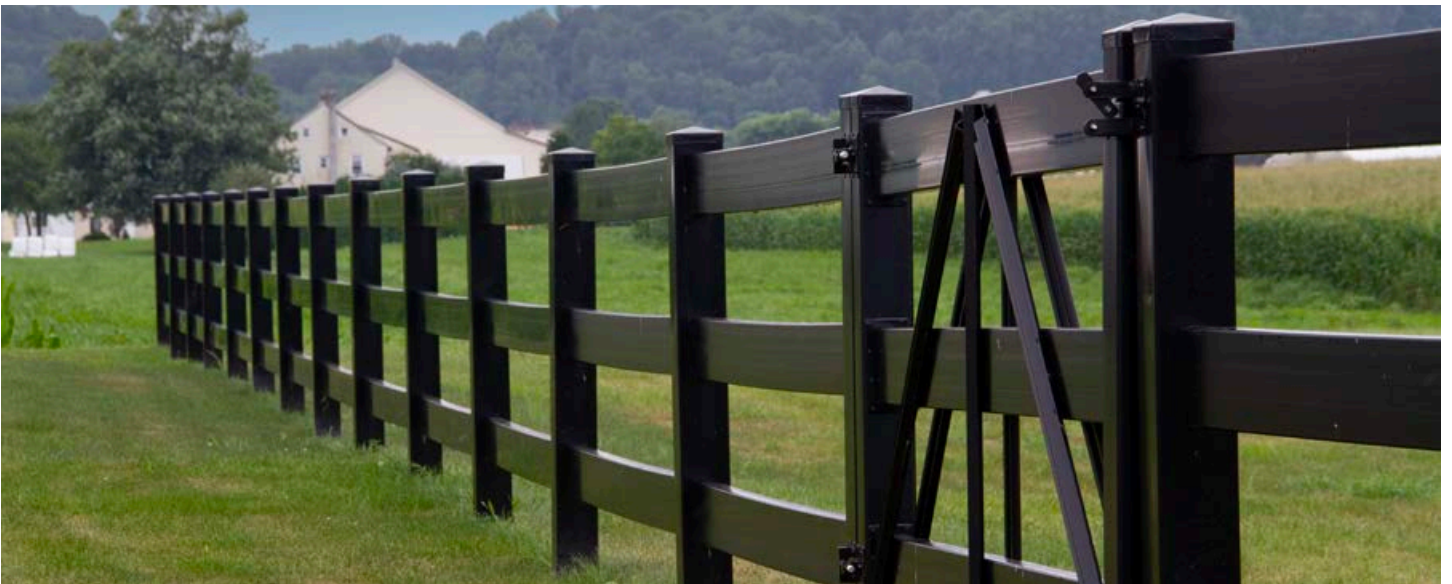
Our black vinyl fencing is designed to make a statement. With its rich, bold color, it adds a striking contrast to any landscape, instantly elevating the look of your outdoor space. Whether you're framing a garden, outlining a pool area, or creating a stylish boundary, this fence stands out for its sleek, modern aesthetic. Plus, the durable finish ensures it stays vibrant and eye-catching for years to come.



## EASILY MAINTAINED

---

Our vinyl fencing provides unmatched low-maintenance convenience. Unlike wood, it won't rot, warp, or fade, and there's no need for staining or painting. That means less time spent on upkeep and more time enjoying your outdoor space.



## PRIVACY FENCE



Create a safe, quiet backyard retreat with Superior privacy fencing! You can make your own backyard a place to truly get away.

Heights: 48" • 60" • 72" • 84" • 96" (Pool Height)

Widths: 72" • 96"

Rail Options: 1½" x 5½" Smooth Rail  
2" x 7" Smooth Rail  
2" x 6½" Deco Rail



## SEMI-PRIVACY FENCE

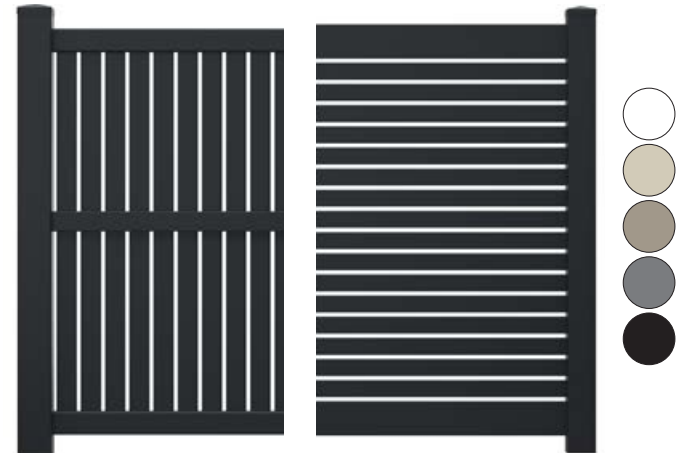


The Imperial fence protects your property from prying eyes while still providing a sense of openness and airflow. Choose from our vertical or horizontal picket configuration.

Heights: 36" • 48" • 60" • 72" (Pool Height)

Widths: 72" • 96"

Infill Options: Vertical  
Horizontal



## RANCH RAIL FENCE

Use rustic ranch rail to give your property that country feel! Unlike wooden rail fence that requires constant maintenance, this fence is built to hold up to the elements and free your time for other pursuits.

Heights: 34" - 60"

Widths: 96"

Infill Options: 2 Rail • 3 Rail • 4 Rail Horizontal  
Crossrail



## PICKET FENCE



Add charm to your yard with a Superior picket fence. Ours is a neighbor-friendly fence, meaning that the pickets go through the rails so the fence looks the same from either side.

Heights: 36" • 48" • 57" (Pool Height)

Widths: 72" • 96"

Infill Options: Straight  
Concave





## WHY SUPERIOR



### TitanShield Color Protection

Superior's black color is not laminate or paint, it's a **coextruded vinyl cap** that's full of rich color and formulated with **TitanShield** color protection, so it won't scratch off or noticeably fade over time.



### SureLock Technology

Your fence security starts at the factory with Superior's **SureLock** interlocking design. SureLock ensures that your privacy fence panels **stay firmly connected** with no rattling or light shining through.



### Custom Formulation

Superior doesn't use cheap filler in our vinyl recipe. Instead, we use more **TiO2**, which keeps colors strong, and **impact modifiers**, which help vinyl resist brittleness, so it won't crack or break.



### Industry-Leading Warranty

Be confident in your investment with the backing of our limited **lifetime warranty**. We don't think you'll need to make a warranty claim, but we're here if you do.

## WANT EVEN MORE?

Visit us online to browse our entire collection of fencing solutions.  
[superioroutdoors.com](https://superioroutdoors.com)



### COLORS:

White

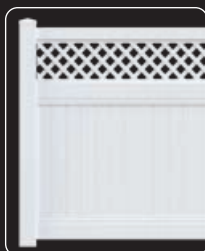
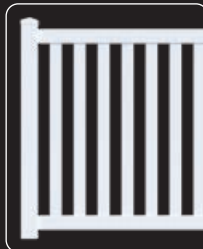
Almond

Clay

Slate

Black

### STYLES:



### GATES & HARDWARE:

Superior Fencing provides gates to coordinate beautifully with our fences. Each of our gates is custom-built to our customers' size specifications for a perfect fit each time.





Manufactured in the **USA**

Superior's products are proudly designed and  
manufactured in the **USA** to ensure a quality fit and finish.



**SUPERIOR**<sup>™</sup>  
OUTDOOR PRODUCTS



[superioroutdoors.com](https://www.superioroutdoors.com) | 1-800-633-7093

© Superior Outdoor Products | 240827